

14.44 Acres
CR 200 - Joppa

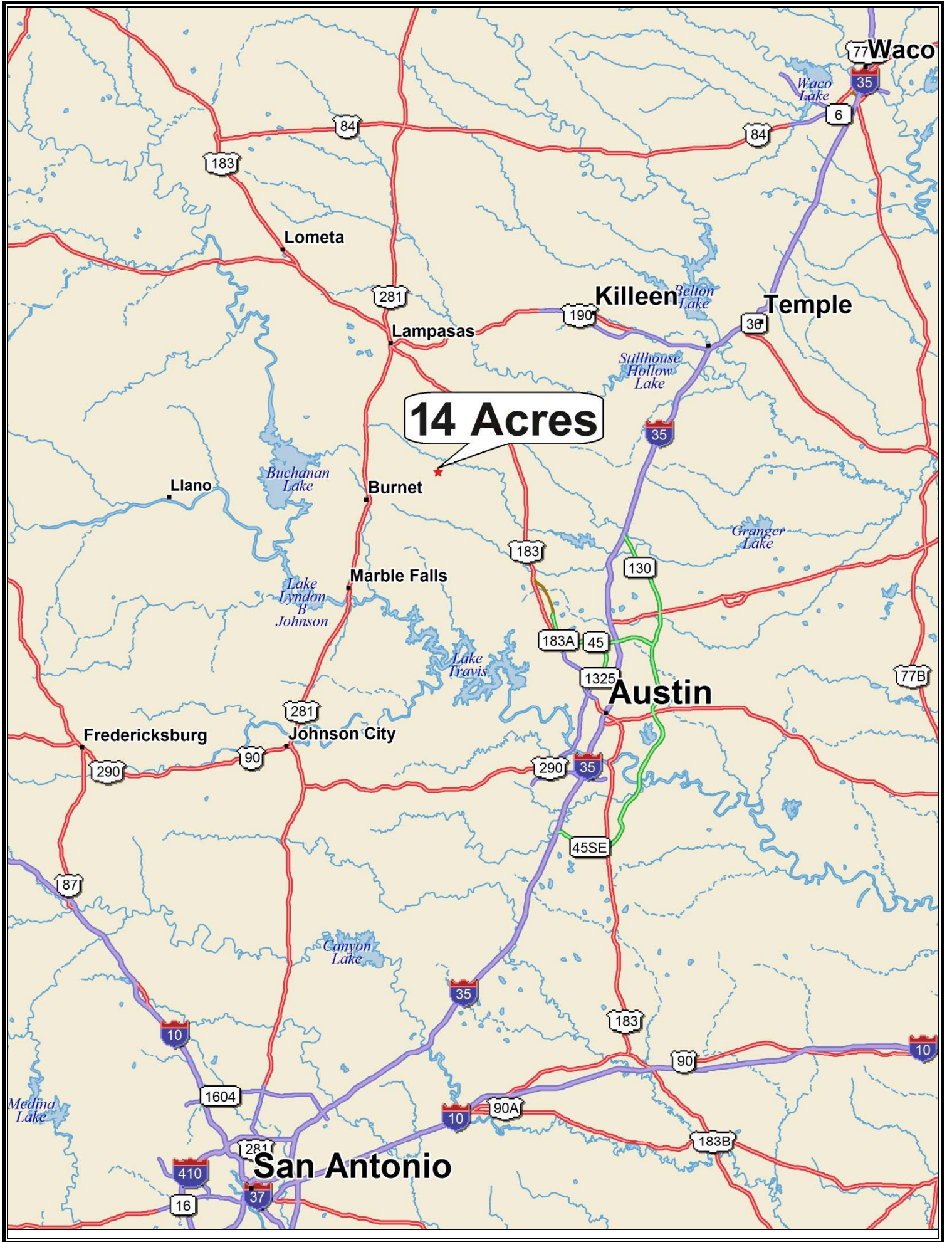


14 acres located near the community of Joppa in Burnet County. The property has excellent cover with an abundance of beautiful hardwood trees, including post oak, live oak and elm. There are also long distance easterly views. Electricity is on site and there is excellent paved road frontage. No restrictions and no HOA. Located 7 miles to Bertram, 11 miles to Burnet, 15 miles to Liberty Hill and one hour to downtown Austin.

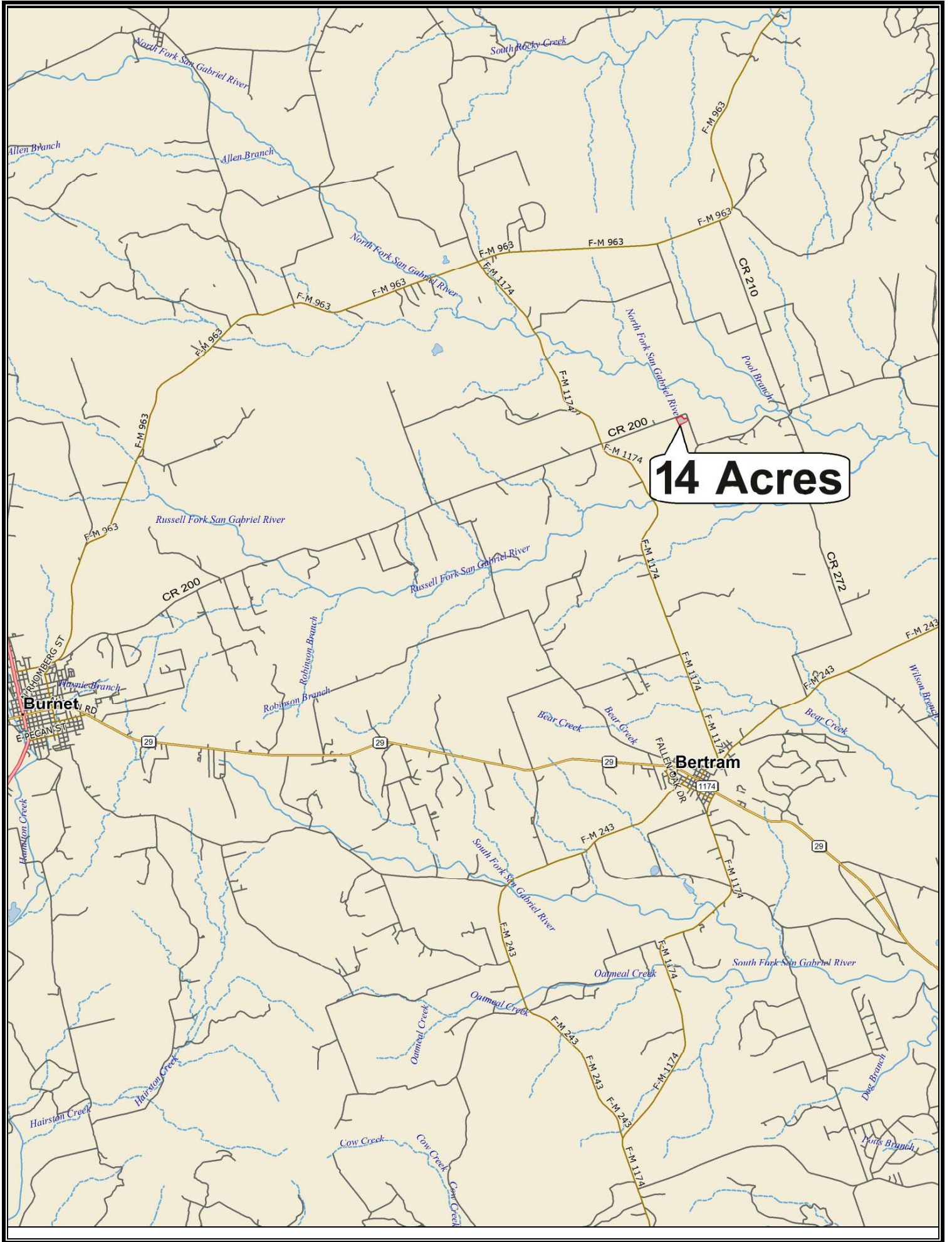
\$318,000



This information is deemed reliable but is not guaranteed. cc.



14 Acres



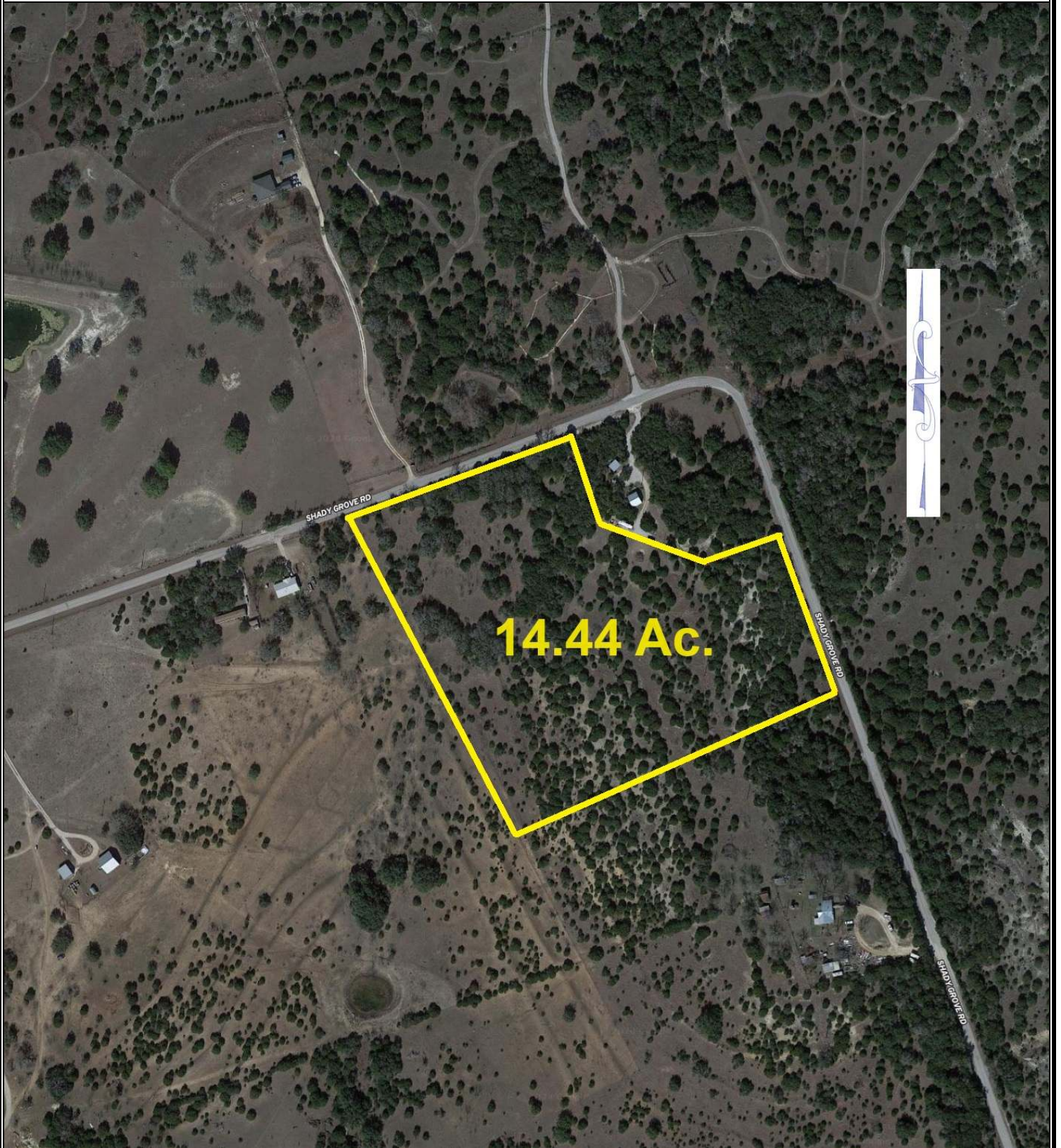
14 Acres

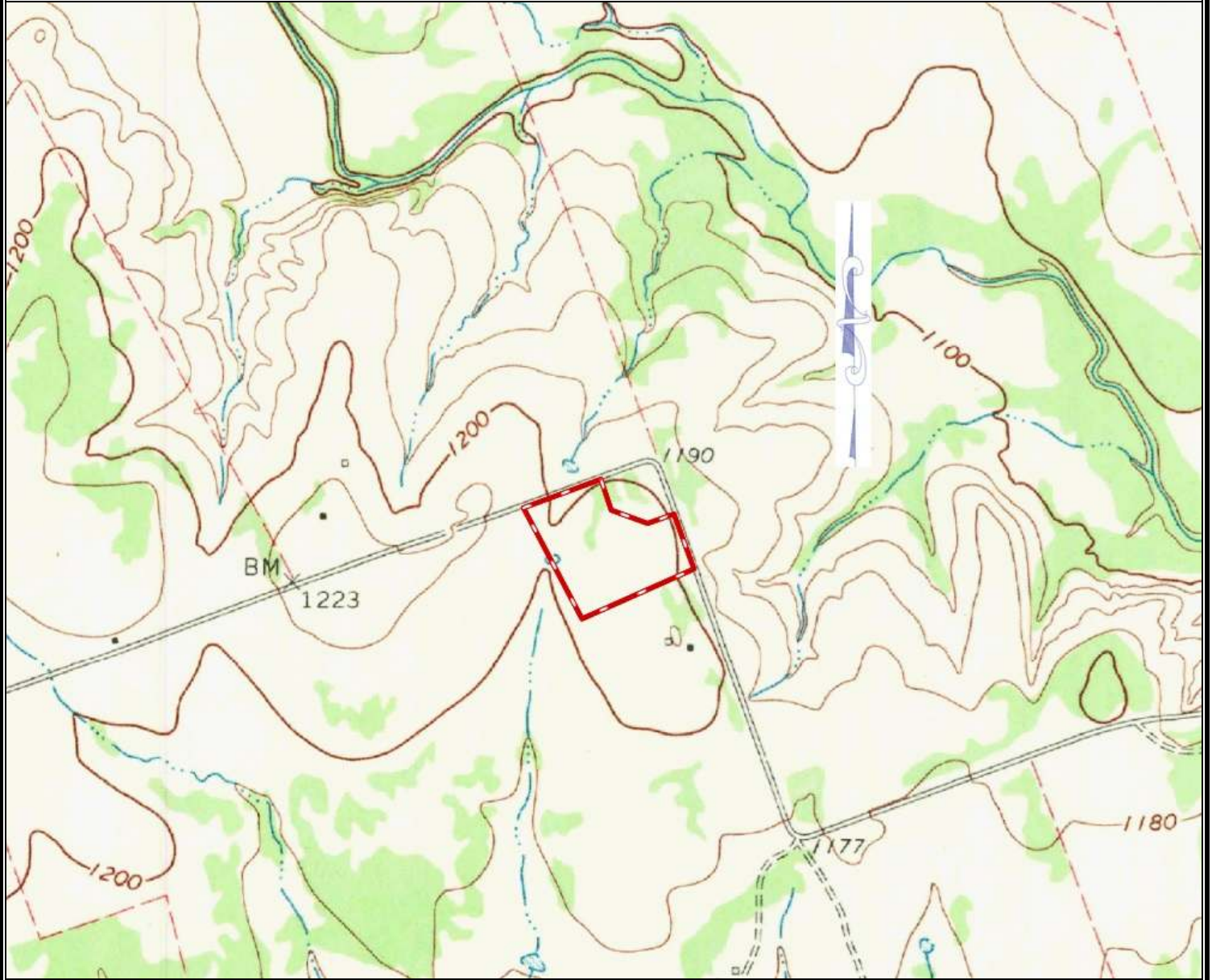
14.44 Ac.

SHADY GROVE RD

SHADY GROVE RD

SHADY GROVE RD







Property Summary Sheet

LOCATION: County Road 200

SIZE: 14.44 acres

FENCING: Partial

UTILITIES: Electric

SCHOOL DISTRICT: Burnet

TAX RATE: 1.33, Agricultural exemption

RESTRICTIONS: None

All sizes, areas, volumes, lengths and distances contained herein are only approximations and are not intended, nor should they be accepted as exact measurements. All information furnished is from sources deemed reliable, but no warranty or representation, expressed or implied, is made to the accuracy thereof, and is submitted to prior sale, withdrawal or other changes in the price or terms without notice.



email: ranches@jimberryranchsales.com