

20 Acres
Bertram, Tx



20 acres on the south fork of the San Gabriel River located on CR 330 about 5 minutes west of Bertram and 10 minutes east of Burnet. The diverse land transitions from shallow soil with scattered oaks to river bottom featuring pecan trees and an 8 acre coastal Bermuda field. No HOA and no deed restrictions. Ag-exempt. A little under an hour to downtown Austin.

\$520,000



This information is deemed reliable but is not guaranteed. cc.



20 Acres

Waco

Temple

Killeen

Lampasas

Burnet

Marble Falls

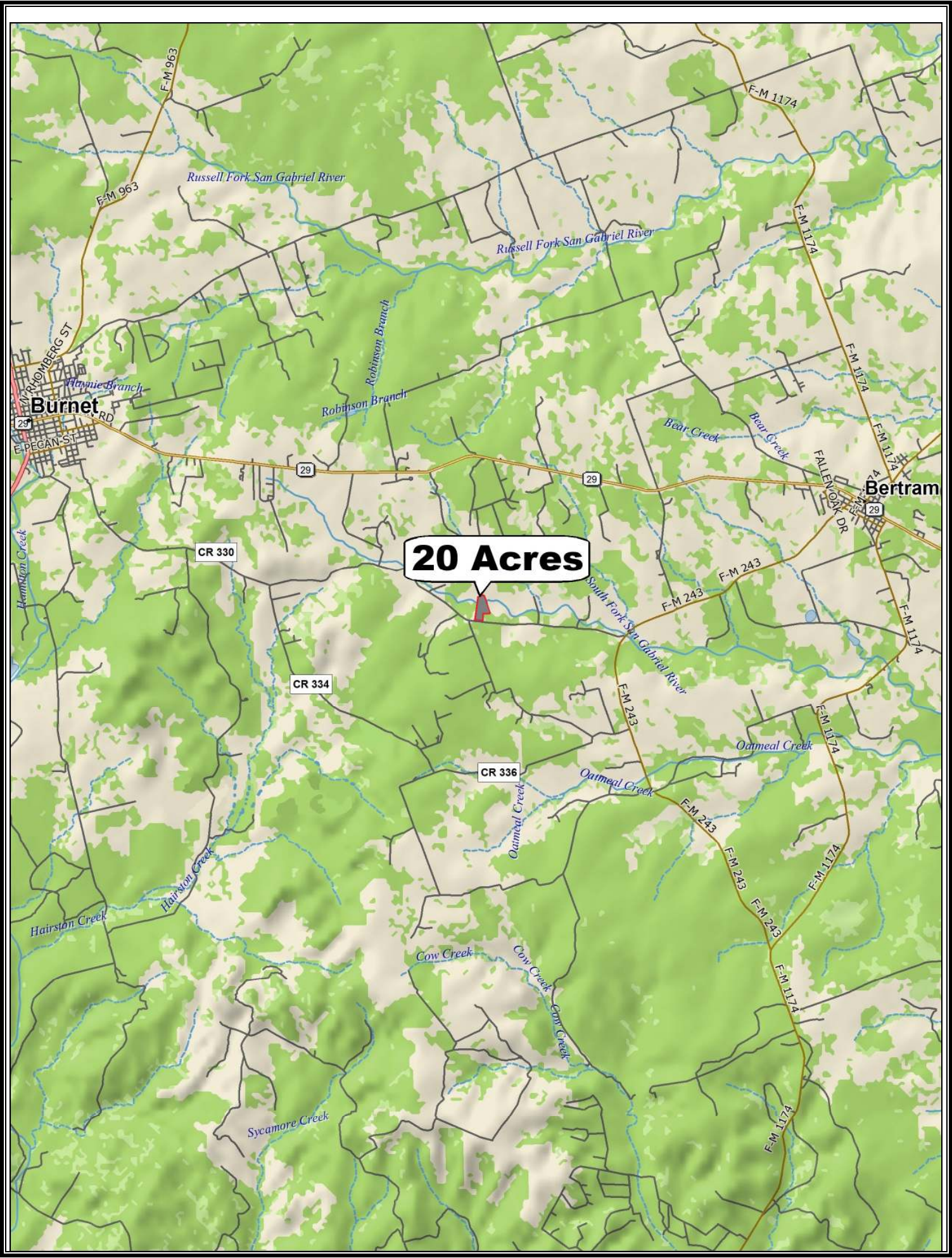
Johnson City

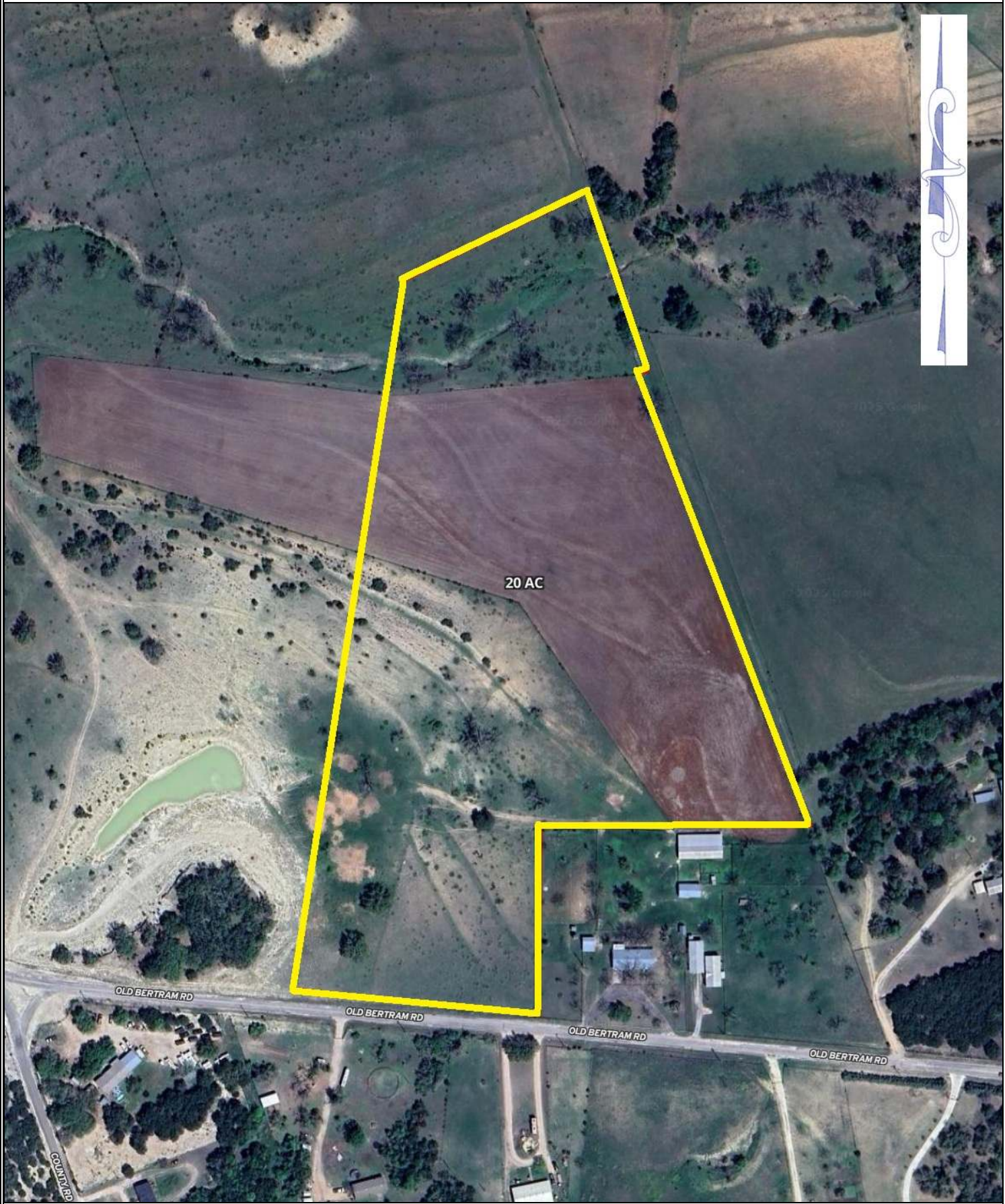
Fredericksburg

Austin

San Antonio

20 Acres





COMMUNITY

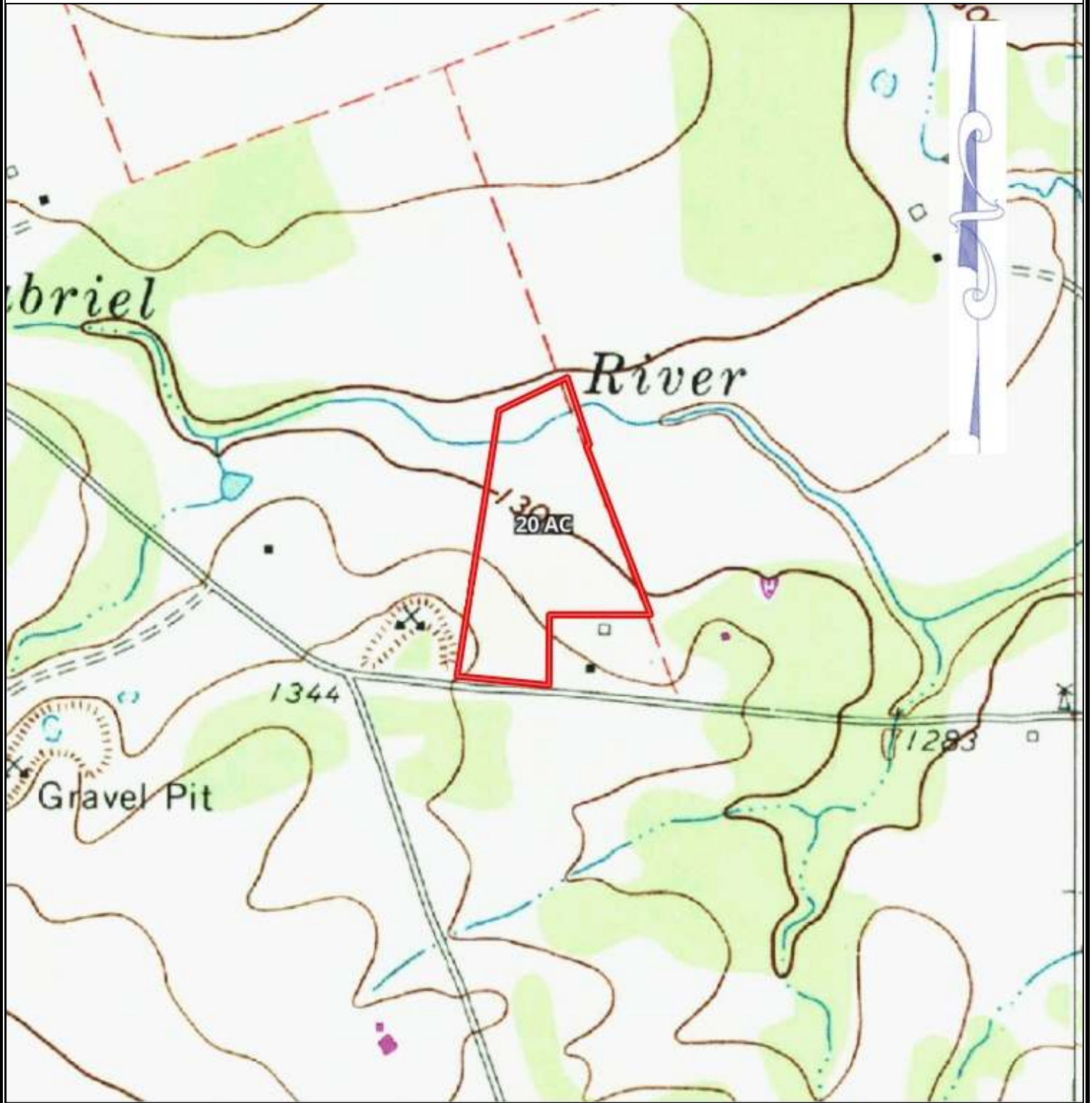
OLD BERTRAM RD

OLD BERTRAM RD

OLD BERTRAM RD

OLD BERTRAM RD

20 AC





Property Summary Sheet

LOCATION: County Road 330, Bertram, Tx

SIZE: 20+/- acres

FENCING: Partial

SURFACE WATER: San Gabriel River

SCHOOL DISTRICT: Burnet

TAX RATE: 1.33, Agricultural exemption

RESTRICTIONS: None

All sizes, areas, volumes, lengths and distances contained herein are only approximations and are not intended, nor should they be accepted as exact measurements. All information furnished is from sources deemed reliable, but no warranty or representation, expressed or implied, is made to the accuracy thereof, and is submitted to prior sale, withdrawal or other changes in the price or terms without notice.



email: ranches@jimberryranchsales.com