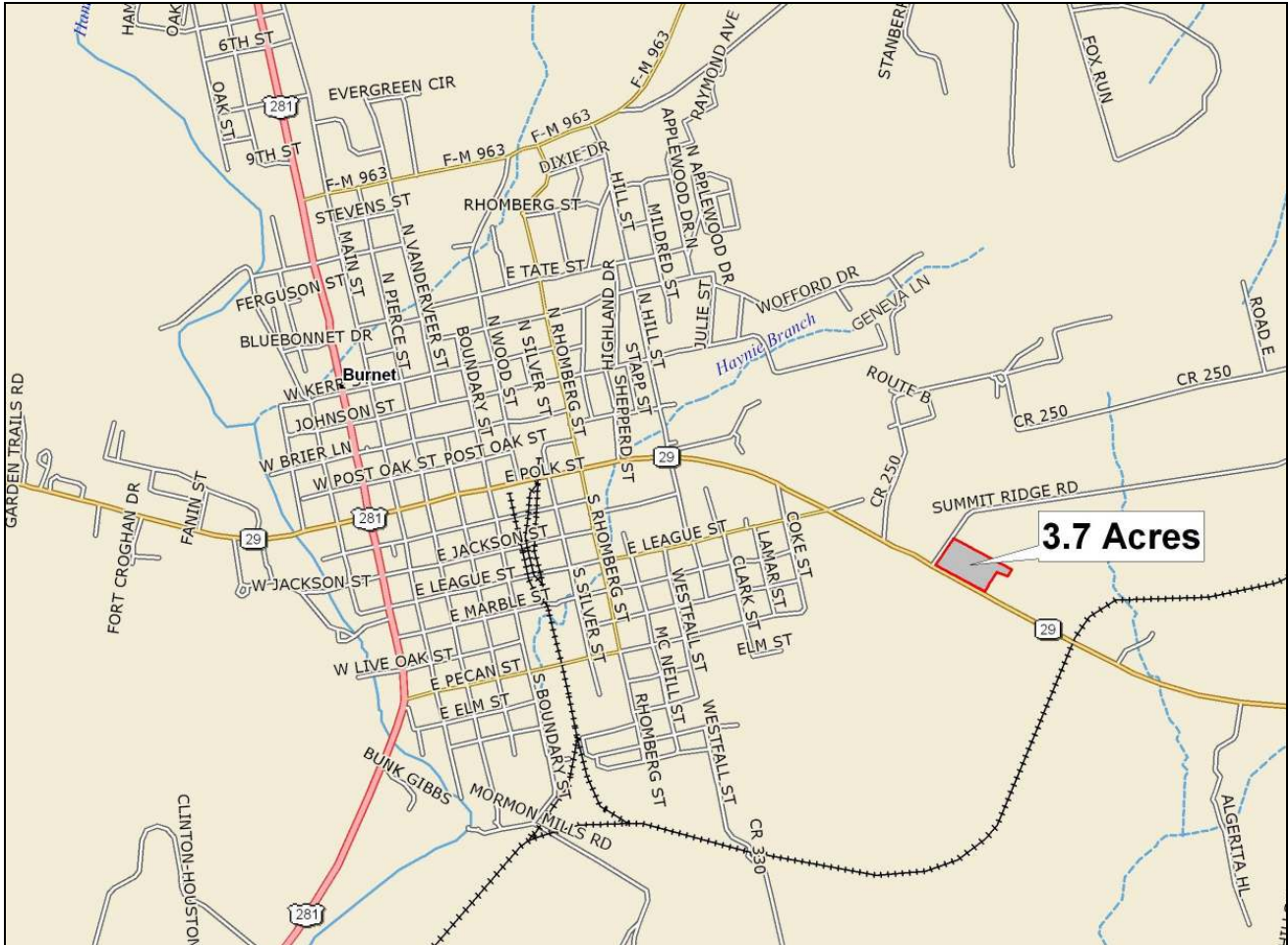


3.7 Acres Commercial
Hwy. 29
City of Burnet

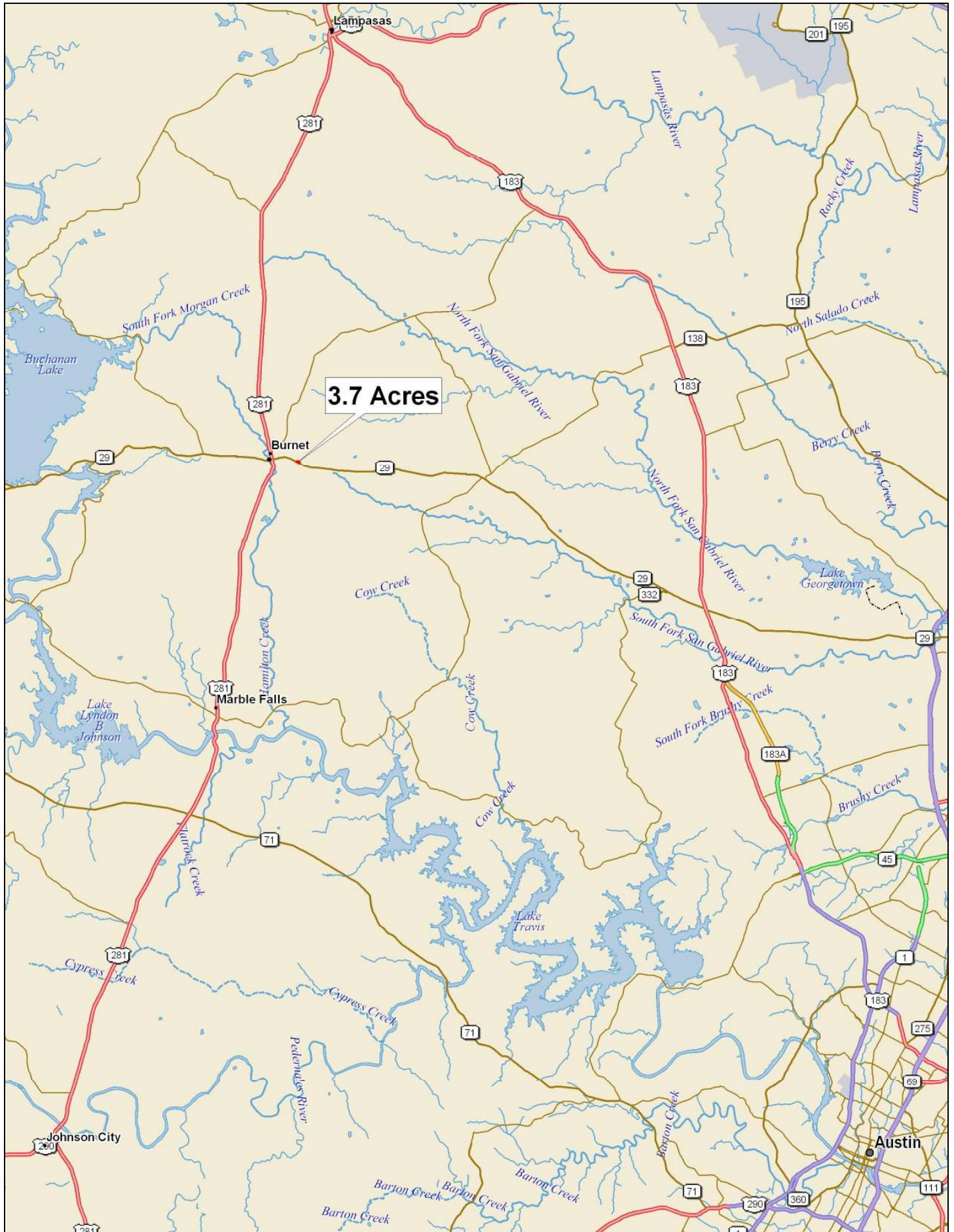


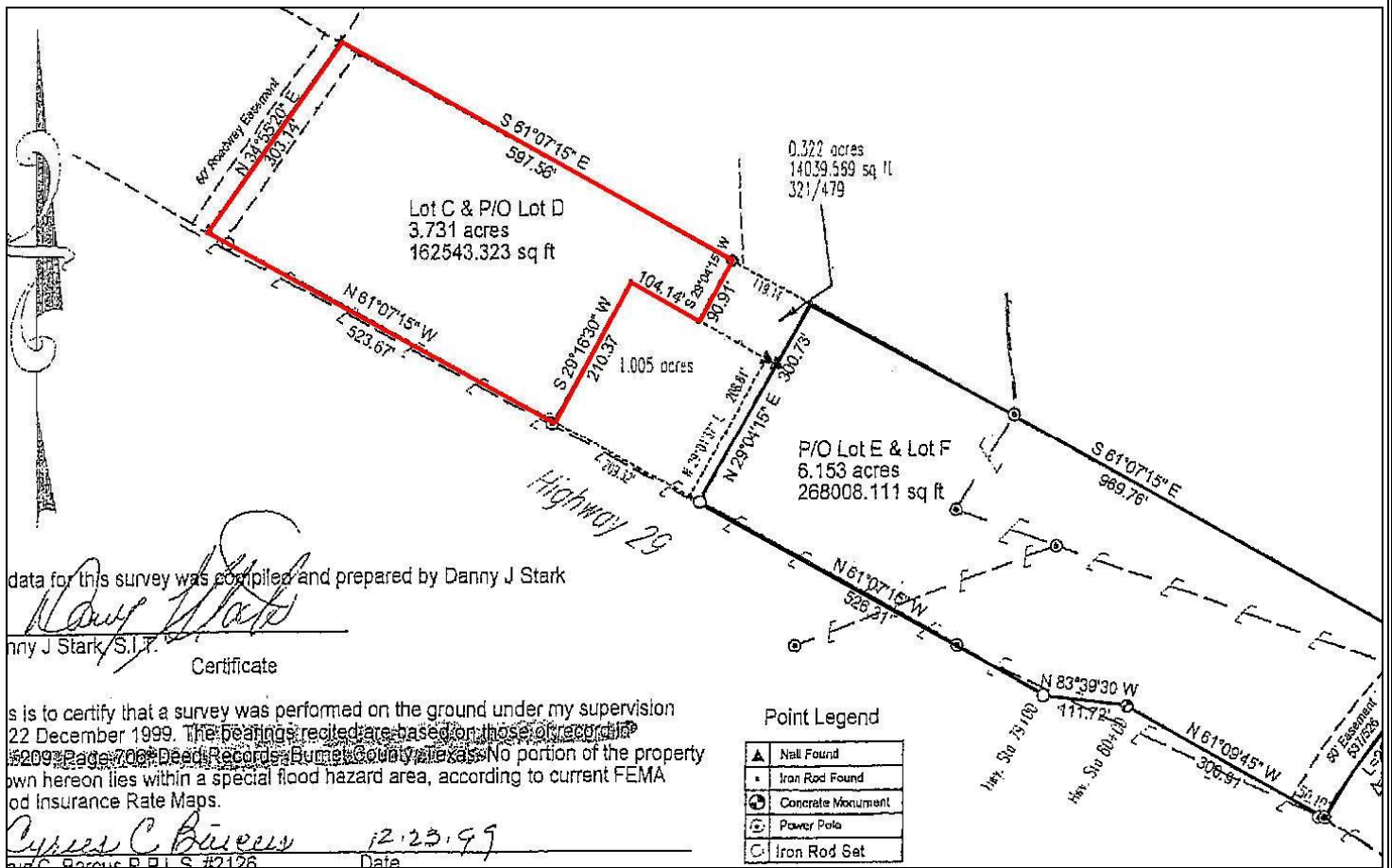
A total of 523+/- feet of frontage on Highway 29. There are numerous commercial possibilities. With the extension of the 183 toll road, Austin is getting closer quickly. Burnet offers a municipal 18 hole golf course and recreation complex, Seton Highland Lakes Hospital and an airport with 5,000 foot runway. The tax rate is 1.846

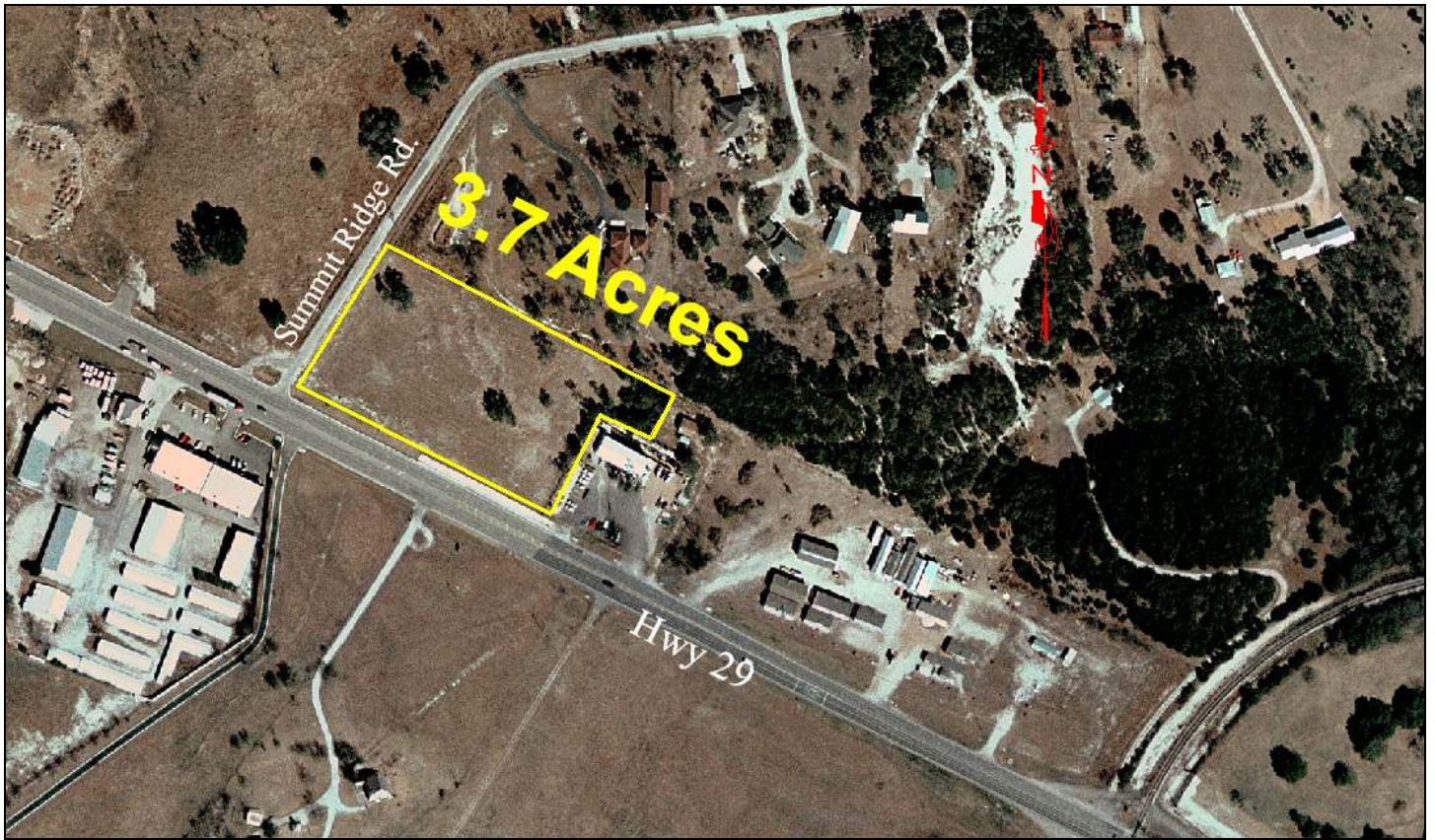
Price: \$499,000



This information is deemed reliable but is not guaranteed. L.N.







Property Summary Sheet

LOCATION: City of Burnet, East Highway 29

SIZE: 3.7 acres

IMPROVEMENTS: None

UTILITIES: Will need well & septic or have city services brought in which are about a block away

2023 TAXES: 1.85% tax rate

ZONED: R1

EASEMENT: Yes

All sizes, areas, volumes, lengths and distances contained herein are only approximations and are not intended, nor should they be accepted as exact measurements. All information furnished is from sources deemed reliable, but no warranty or representation, expressed or implied, is made to the accuracy thereof, and is submitted to prior sale, withdrawal or other changes in the price or terms without notice.



email: ranches@jimberryranchsales.com